

BLUOS®

Windows 10 FILE SHARING

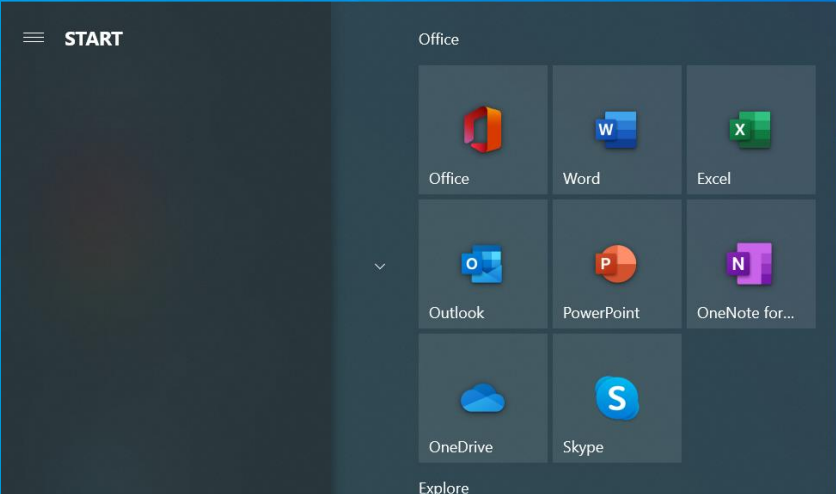
VERIFY NETWORK ENVIRONMENT SETTINGS

SET UP FILE SHARING

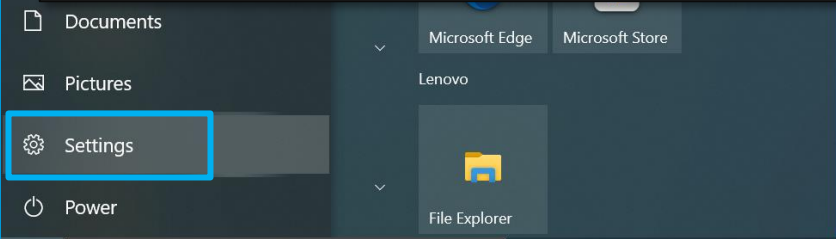
SHARE YOUR MUSIC LIBRARY



Verify Network Environment Settings



On your Windows Computer, select the Start menu > **Settings**.



Verify Network Environment Settings

Windows Settings

Find a setting



System

Display, sound, notifications, power



Devices

Bluetooth, printers, mouse



Phone

Link your Android, iPhone



Network & Internet

Wi-Fi, airplane mode, VPN



Personalization

Background, lock screen, colors



Apps

Uninstall, defaults, optional features



Accounts

Your accounts, email, sync, work, other people



Time & Language

Speech, region, date



Gaming

Xbox Game Bar, captures, Game Mode



Ease of Access

Narrator, magnifier, high contrast



Search

Find my files, permissions



Privacy

Location, camera, microphone



Update & Security

Windows Update, recovery, backup

Select **Network & Internet**.



Find a setting 🔍

Network & Internet

🌐 Status

📶 Wi-Fi

🖨️ Ethernet

📶 Dial-up

🔒 VPN

✈️ Airplane mode

📶 Mobile hotspot

🌐 Proxy

Status

If you have a limited data plan, you can make this network a metered connection or change other properties.

📶 Wi-Fi (wasmi - 2.4) 20.27 GB
From the last 30 days

Properties

Data usage

🌐 Show available networks
View the connection options around you.

Advanced network settings

🖨️ Change adapter options
View network adapters and change connection settings.

📶 Network and Sharing Center
For the networks you connect to, decide what you want to share.

⚠️ Network troubleshooter
Diagnose and fix network problems.

View hardware and connection properties

Windows Firewall

Verify Network Environment Settings

Select the connected network's **Properties**.

Settings

←

wasmi - 2.4

Connect automatically when in range

On

Network profile

Public
Your PC is hidden from other devices on the network and can't be used for printer and file sharing.

Private
For a network you trust, such as at home or work. Your PC is discoverable and can be used for printer and file sharing if you set it up.

[Configure firewall and security settings](#)

Metered connection

If you have a limited data plan and want more control over data usage, make this connection a metered network. Some apps might work differently to reduce data usage when you're connected to this network.

Set as metered connection

Off

If you set a data limit, Windows will set the metered connection setting for you to help you stay under your limit.

Se

IP

IP

Select **Private** to enable network discovery options and click the back arrow in the upper-left corner.

Network & Internet

🌐 Status

📶 Wi-Fi

🖥️ Ethernet

☎️ Dial-up

🔒 VPN

✈️ Airplane mode

📶 Mobile hotspot

🌐 Proxy

Wi-Fi

Wi-Fi On

🔒 wasmi - 2.4
Connected, secured

Show available networks

Hardware properties

Manage known networks

Hotspot 2.0 networks

Hotspot 2.0 networks make it more secure to connect to public Wi-Fi hotspots. They might be available in public places like airports, hotels, and cafes.

Let me use Online Sign-Up to get connected

On

When you turn this on and choose a Hotspot 2.0 network, we'll show a list of providers to choose from so you can get online.

Verify Network Environment Settings

Connect to a wireless network

If you don't see the wireless network you want, select Show available networks, select the one you want, and select Connect.

Related settings

Change adapter options

Change advanced sharing options

Network and Sharing Center

Windows Firewall

Help from the web

Using random hardware addresses

Fixing Wifi issues

🗨️ Get help

👤 Give feedback

Find a setting 🔍

Network & Internet

🌐 Status

📶 Wi-Fi

🖨️ Ethernet

📞 Dial-up

🔒 VPN

✈️ Airplane mode

📶 Mobile hotspot

🌐 Proxy

Status

If you have a limited data plan, you can make this network a metered connection or change other properties.

📶 Wi-Fi (wasmi - 2.4) 20.27 GB
From the last 30 days

Properties

Data usage

🌐 Show available networks
View the connection options around you.

Advanced network settings

🖨️ Change adapter options
View network adapters and change connection settings.

📶 Network and Sharing Center
For the networks you connect to, decide what you want to share.

⚠️ Network troubleshooter
Diagnose and fix network problems.

View hardware and connection properties

Windows Firewall

Verify Network Environment Settings

Under **Advanced network settings**, select **Network and Sharing Center**.


Verify Network Environment Settings

- Control Panel Home
- Change adapter settings
- Change advanced sharing settings**
- Media streaming options



View your basic network information and set up connections

View your active networks

wasmi - 2.4
Private network

Access type: Internet
Connections:  Wi-Fi (wasmi - 2.4)

Change your networking settings

-  [Set up a new connection or network](#)
Set up a broadband, dial-up, or VPN connection; or set up a router or access point.
-  [Troubleshoot problems](#)
Diagnose and repair network problems, or get troubleshooting information.

See also
Internet Options
V



Select **Change advanced sharing settings**.

Change sharing options for different network profiles

Windows creates a separate network profile for each network you use. You can choose specific options for each profile.

Private (current profile) _____ (v)

Network discovery _____

When network discovery is on, this computer can see other network computers and devices and is visible to other network computers.

- Turn on network discovery
- Turn on automatic setup of network connected devices.
- Turn off network discovery

File and printer sharing _____

When file and printer sharing is on, files and printers that you have shared from this computer can be accessed by people on the network.

- Turn on file and printer sharing
- Turn off file and printer sharing

Guest or Public _____ (v)

All Networks _____ (v)

Under Private (current profile), select the **Turn on network discovery** and **Turn on automatic setup of network connected devices** options.

Select the **Turn on file and printer sharing** option.

Verify Network Environment Settings

Change sharing options for different network profiles

Windows creates a separate network profile for each network you use. You can choose specific options for each profile.

Private (current profile) ▾

Network discovery ▾

When network discovery is on, this computer can see other network computers and devices and is visible to other network computers.

- Turn on network discovery
- Turn on automatic setup of network connected devices.
- Turn off network discovery

File and printer sharing ▾

When file and printer sharing is on, files and printers that you have shared from this computer can be accessed by people on the network.

- Turn on file and printer sharing
- Turn off file and printer sharing

Guest or Public ▾

All Networks ▾

Select **All Networks**.

Public folder sharing

When Public folder sharing is on, people on the network, including homegroup members, can access files in the Public folders.

- Turn on sharing so anyone with network access can read and write files in the Public folders
- Turn off Public folder sharing (people logged on to this computer can still access these folders)

Media streaming

When media streaming is on, people and devices on the network can access pictures, music, and videos on this computer. This computer can also find media on the network.

[Choose media streaming options...](#)

File sharing connections

Windows uses 128-bit encryption to help protect file sharing connections. Some devices don't support 128-bit encryption and must use 40- or 56-bit encryption.

- Use 128-bit encryption to help protect file sharing connections (recommended)
- Enable file sharing for devices that use 40- or 56-bit encryption

Password protected sharing

When password protected sharing is on, only people who have a user account and password on this computer can access shared files, printers attached to this computer, and the Public folders. To give other people access, you must turn off password protected sharing.

- Turn on password protected sharing
- Turn off password protected sharing

Select **Turn off password protected sharing.**

Lenbrook Industries

All Apps Documents Web More ▾

Best match

- File Explorer**
App

Settings

- File Explorer Options >
- File Explorer Developer Settings >
- Sync File Explorer and other settings >
- Show recently opened items in Jump Lists and in File Explorer >

Search work and web

- file explorer - See work and web results >
- file explorer options >
- file explorer in windows 10 >

File Explorer
App

Open

▼

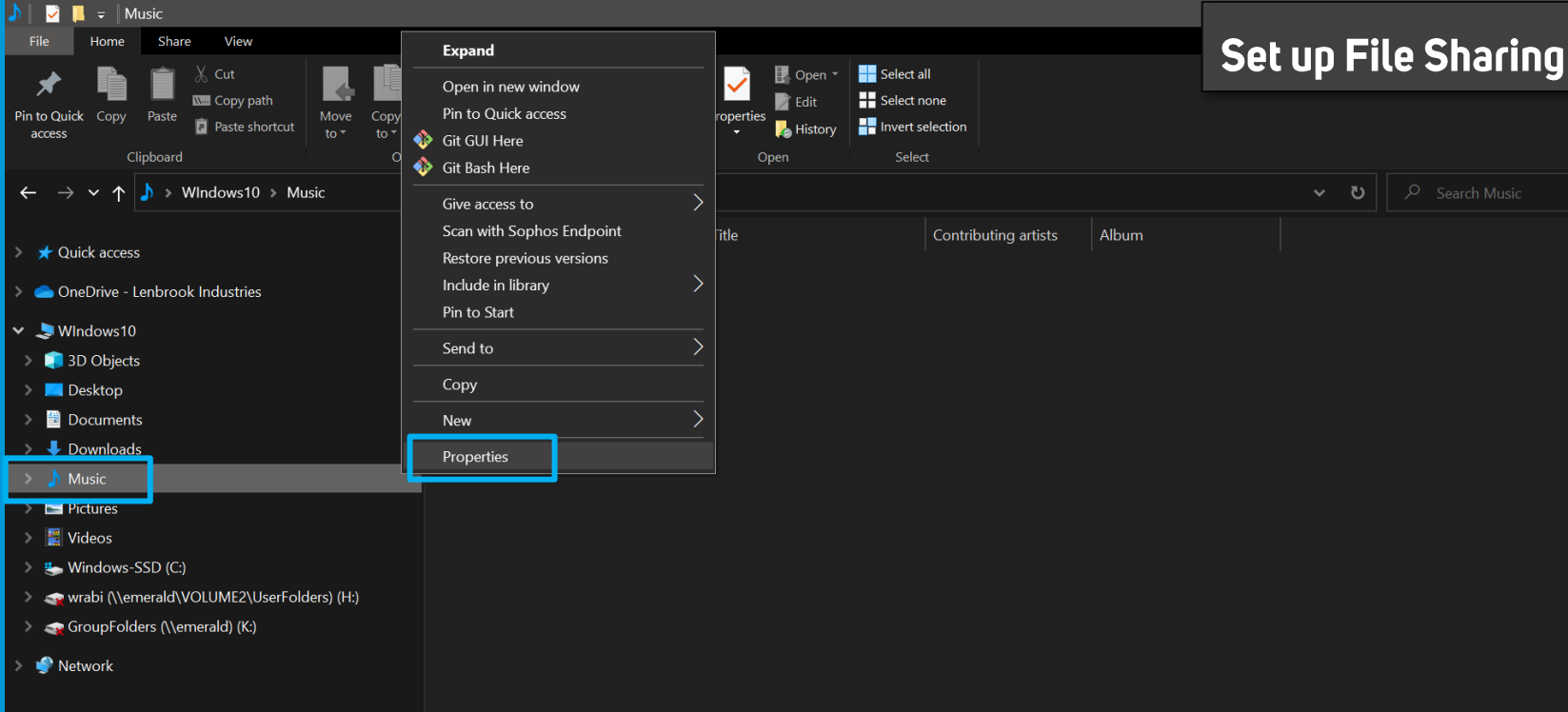
Pinned

- Downloads

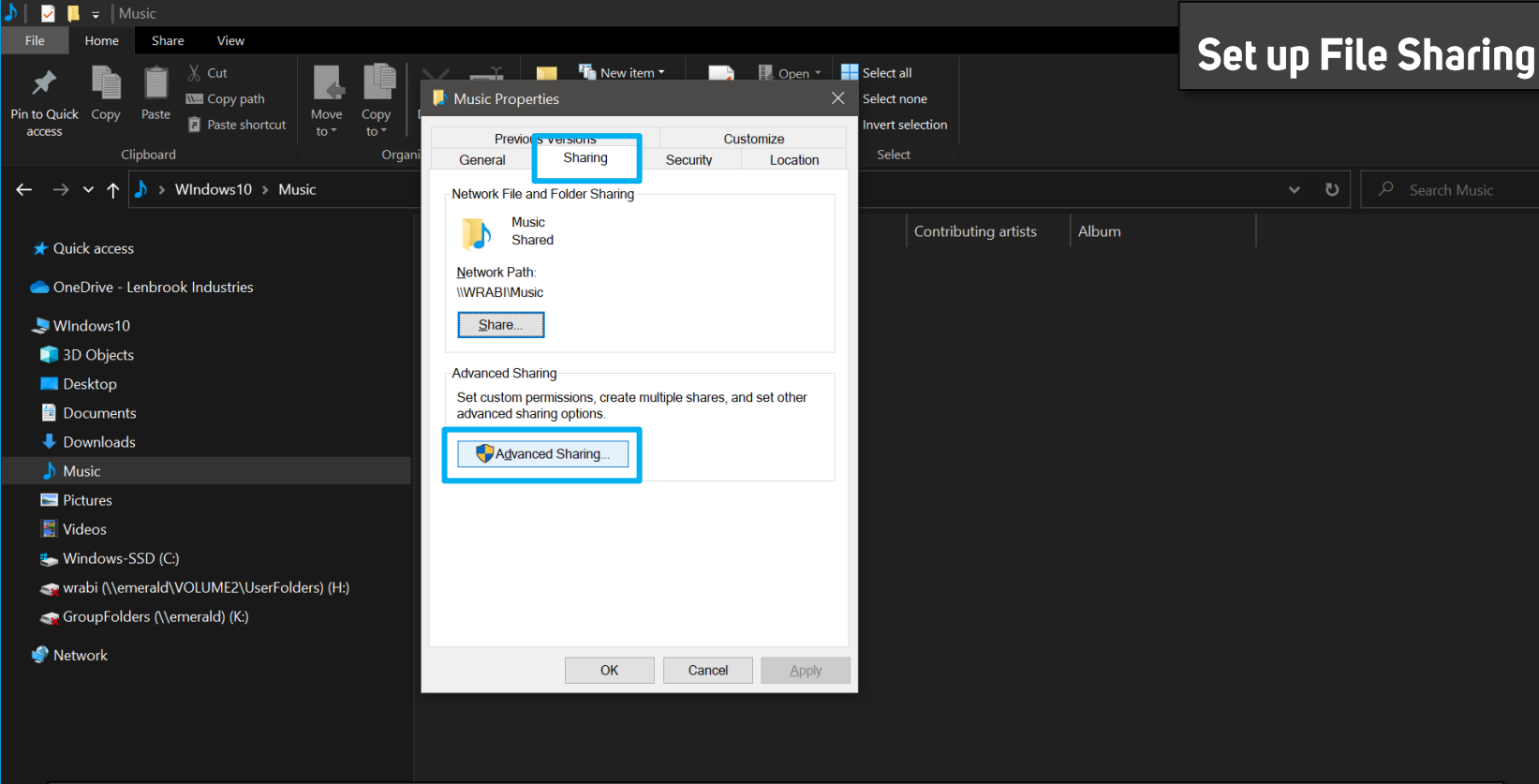
Frequent

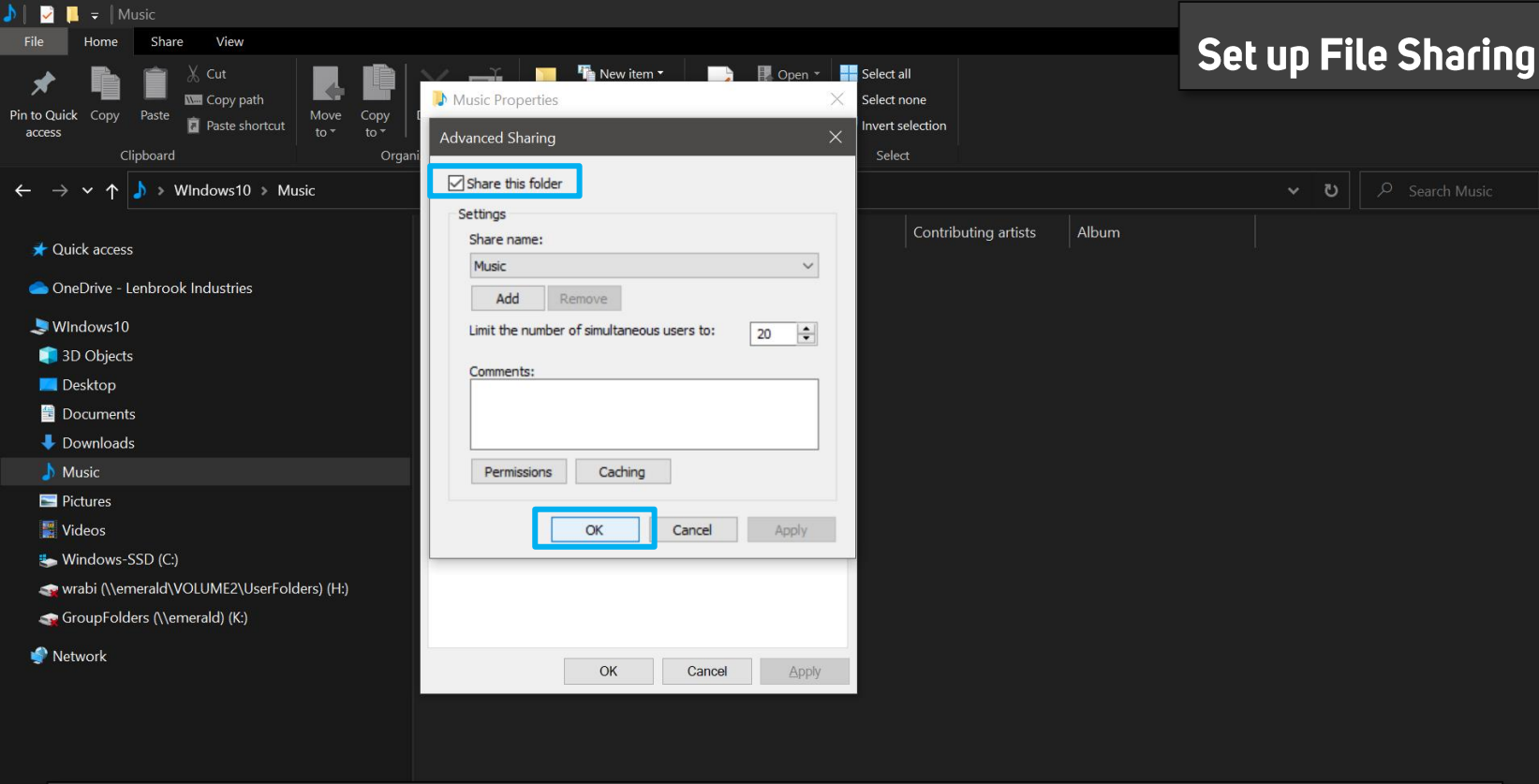
- Video project

Launch **File Explorer**.

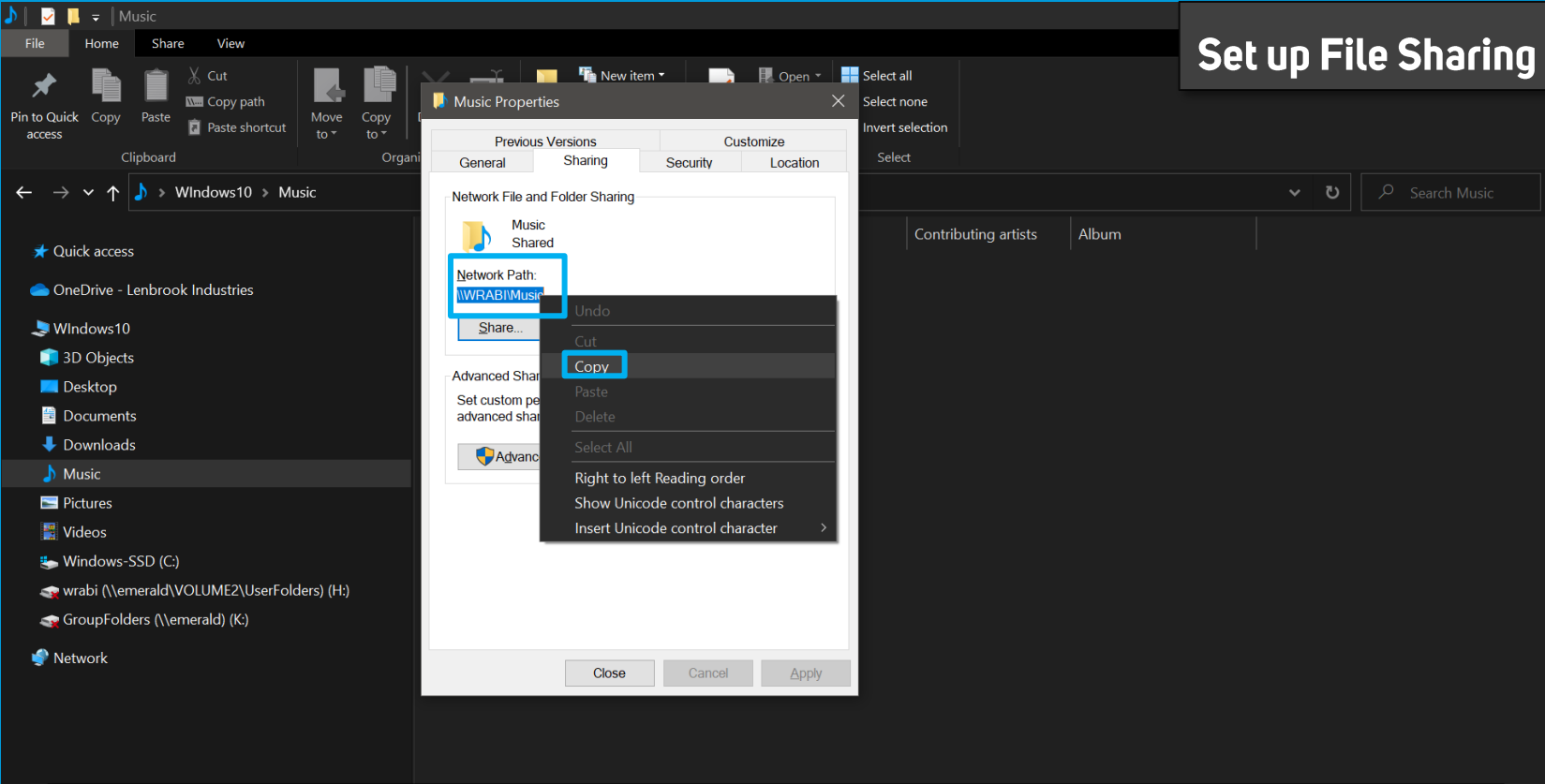


Right-click the **Music** folder (or any folder containing the required music) and select **Properties**.

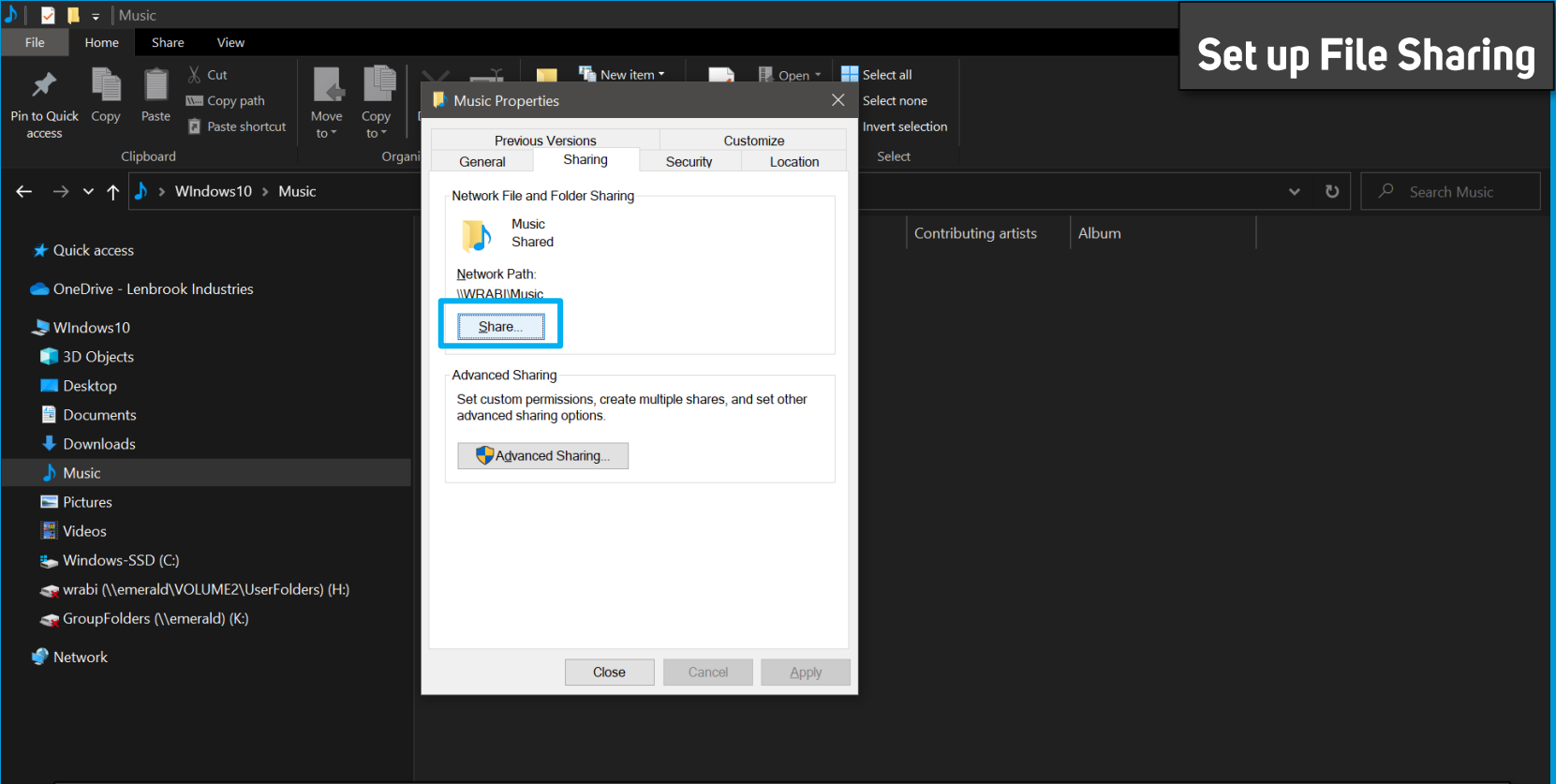




Select **Share this folder** checkbox and click **OK**.



Make note of the **Network Path**. (You will need it later)



Click **Share.**

The screenshot shows a Windows File Explorer window with a 'Music Properties' tab. A 'Network access' dialog box is open, prompting the user to 'Choose people on your network to share with'. The dialog includes a search input field with 'Guest' entered, an 'Add' button, and a table of network users.

Choose people on your network to share with

Type a name and then click Add, or click the arrow to find someone.

Guest Add

Name	Permission Level
PICKERING\wrabi	Owner

[I'm having trouble sharing](#)

Share Cancel

The screenshot shows a Windows File Explorer window with a 'Music Properties' dialog box open. The 'Sharing' tab is active, displaying the 'Network access' dialog. The dialog prompts the user to 'Choose people on your network to share with' and provides a list of users with their permission levels. The 'Guest' user is selected with 'Read/Write' permissions, and 'PICKERING\wrabi' is listed as the 'Owner' with 'Owner' permissions. A 'Share' button is highlighted with a red box.

Choose people on your network to share with

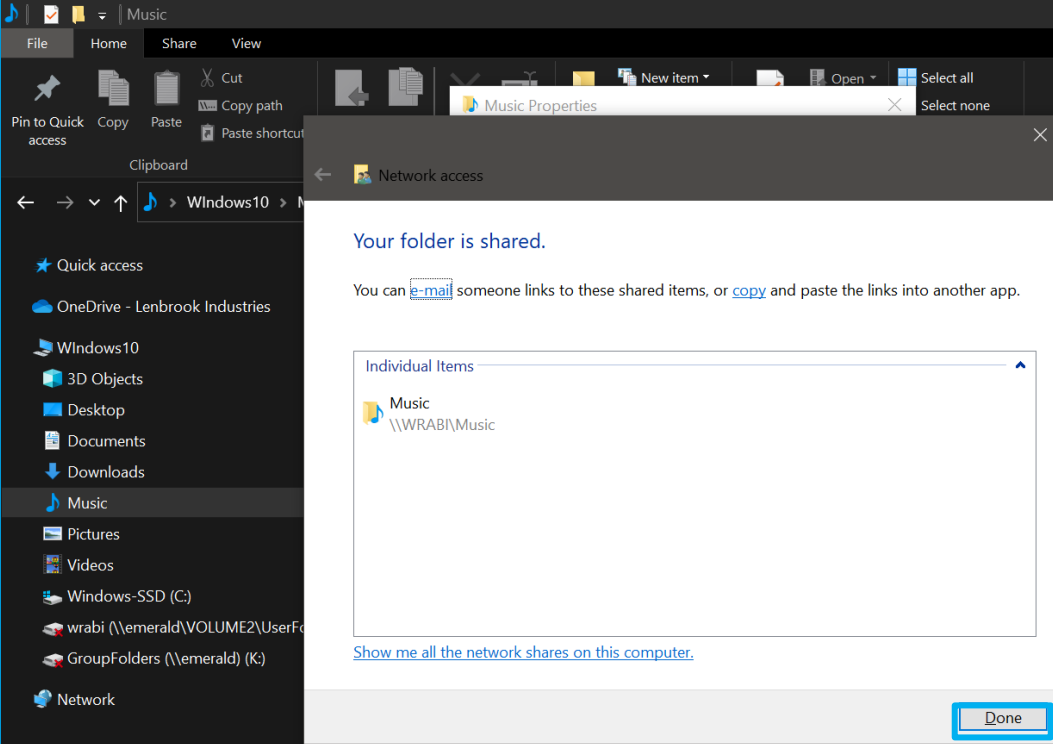
Type a name and then click Add, or click the arrow to find someone.

Add

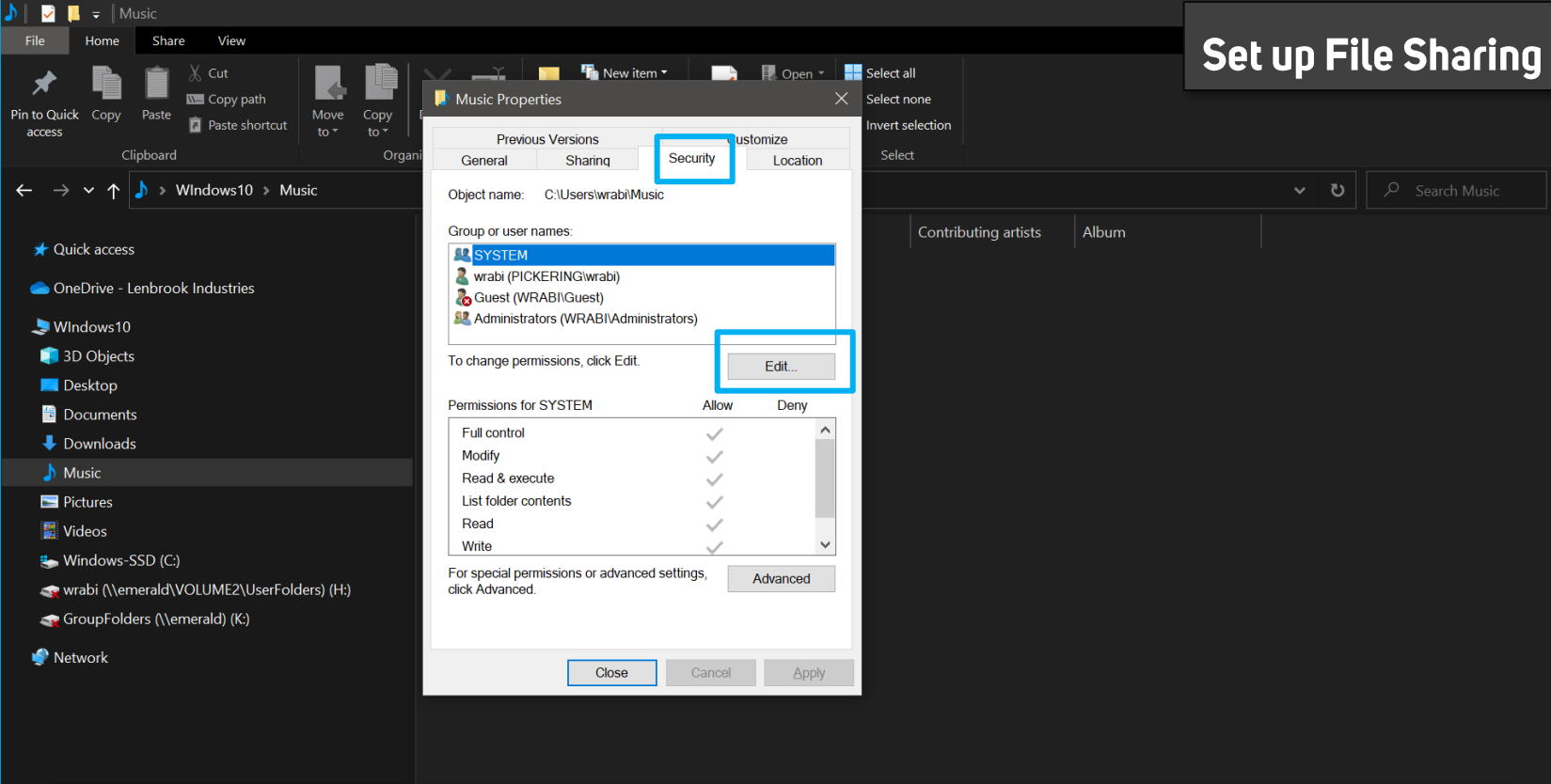
Name	Permission Level
Guest	Read/Write
PICKERING\wrabi	Owner

[I'm having trouble sharing](#)

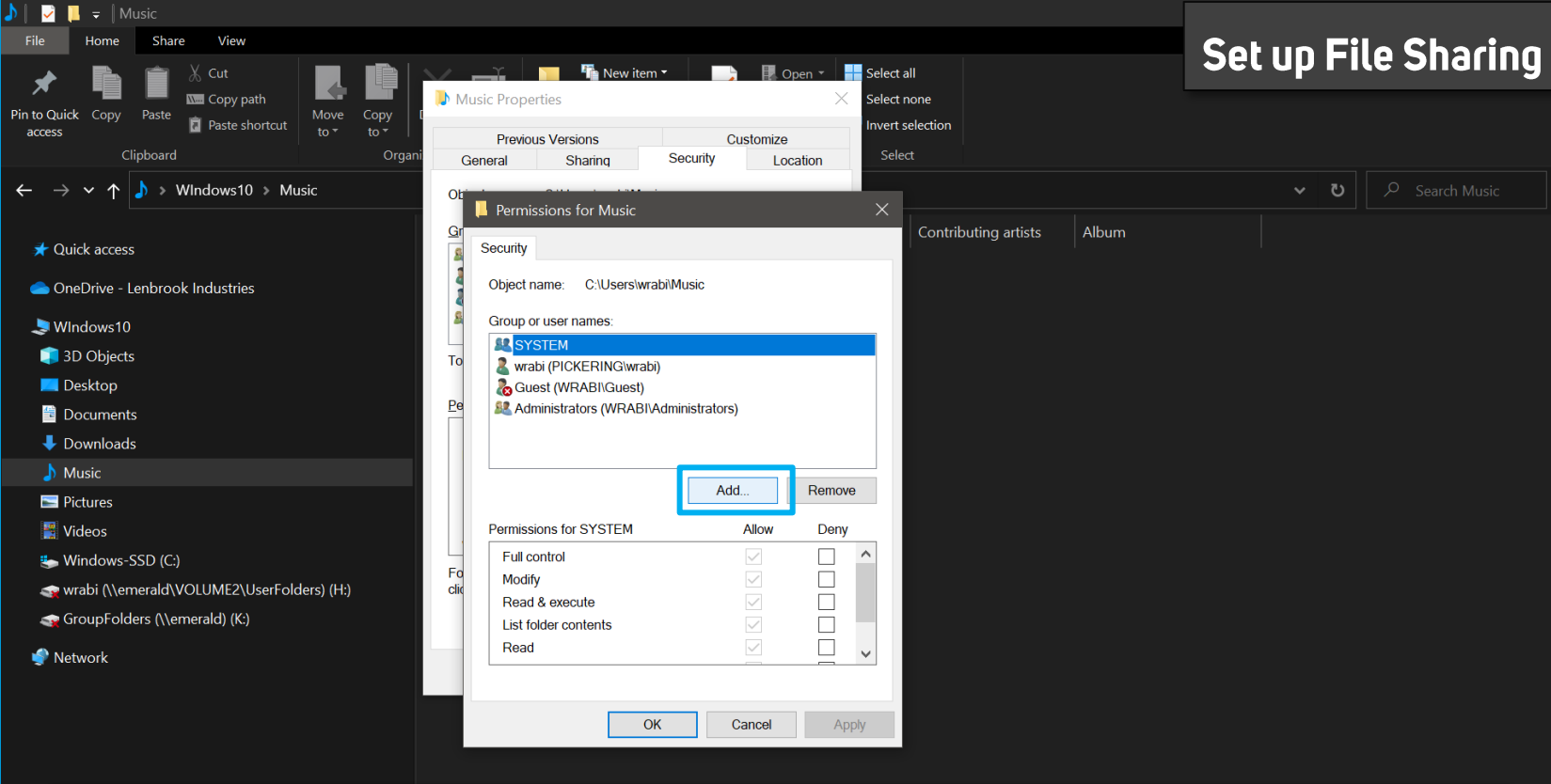
Share Cancel



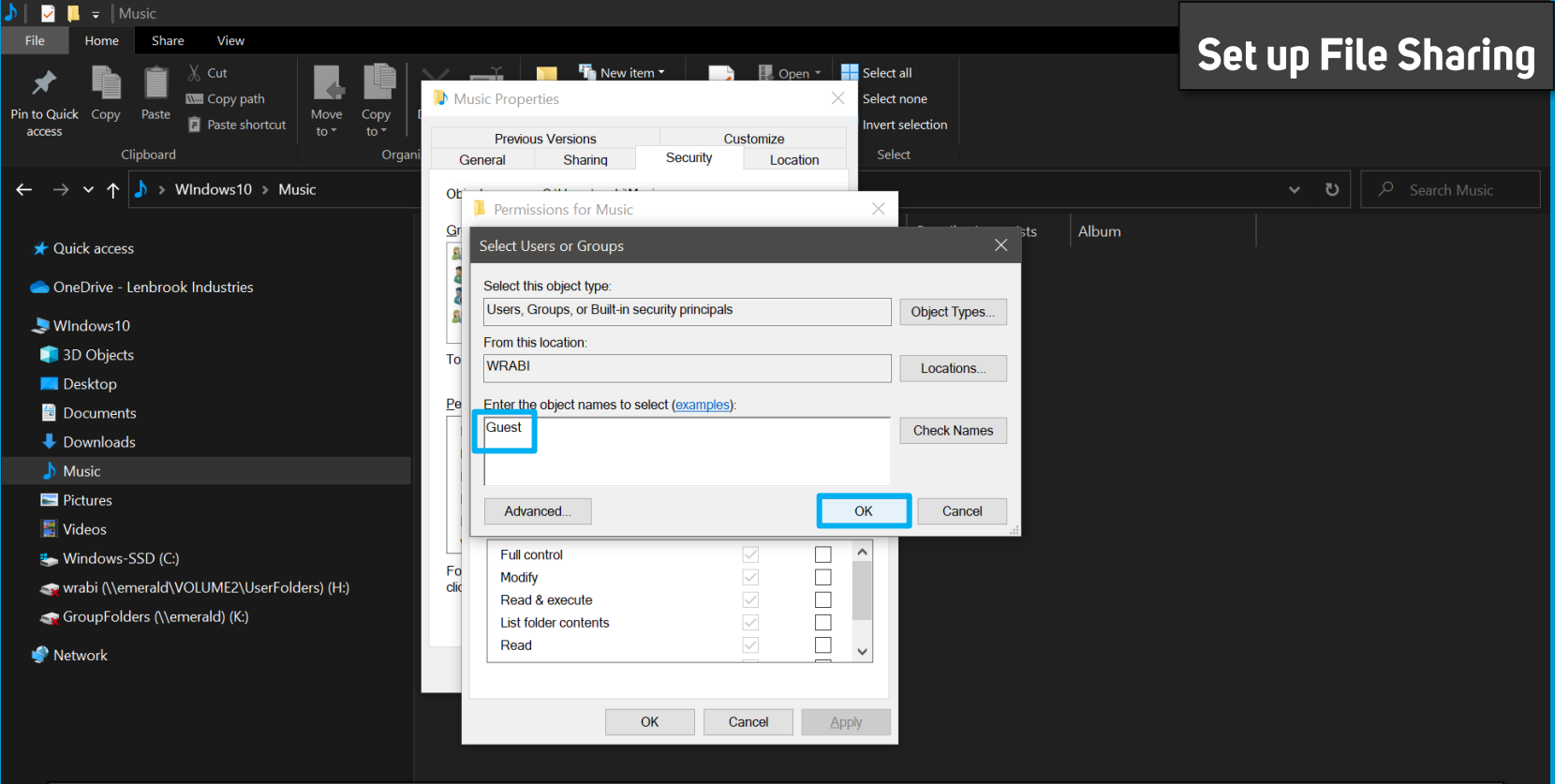
When the **Your folder is shared** message is displayed, click **Done**.



On the **Music properties** dialog, select the **Security** tab and click **Edit**.

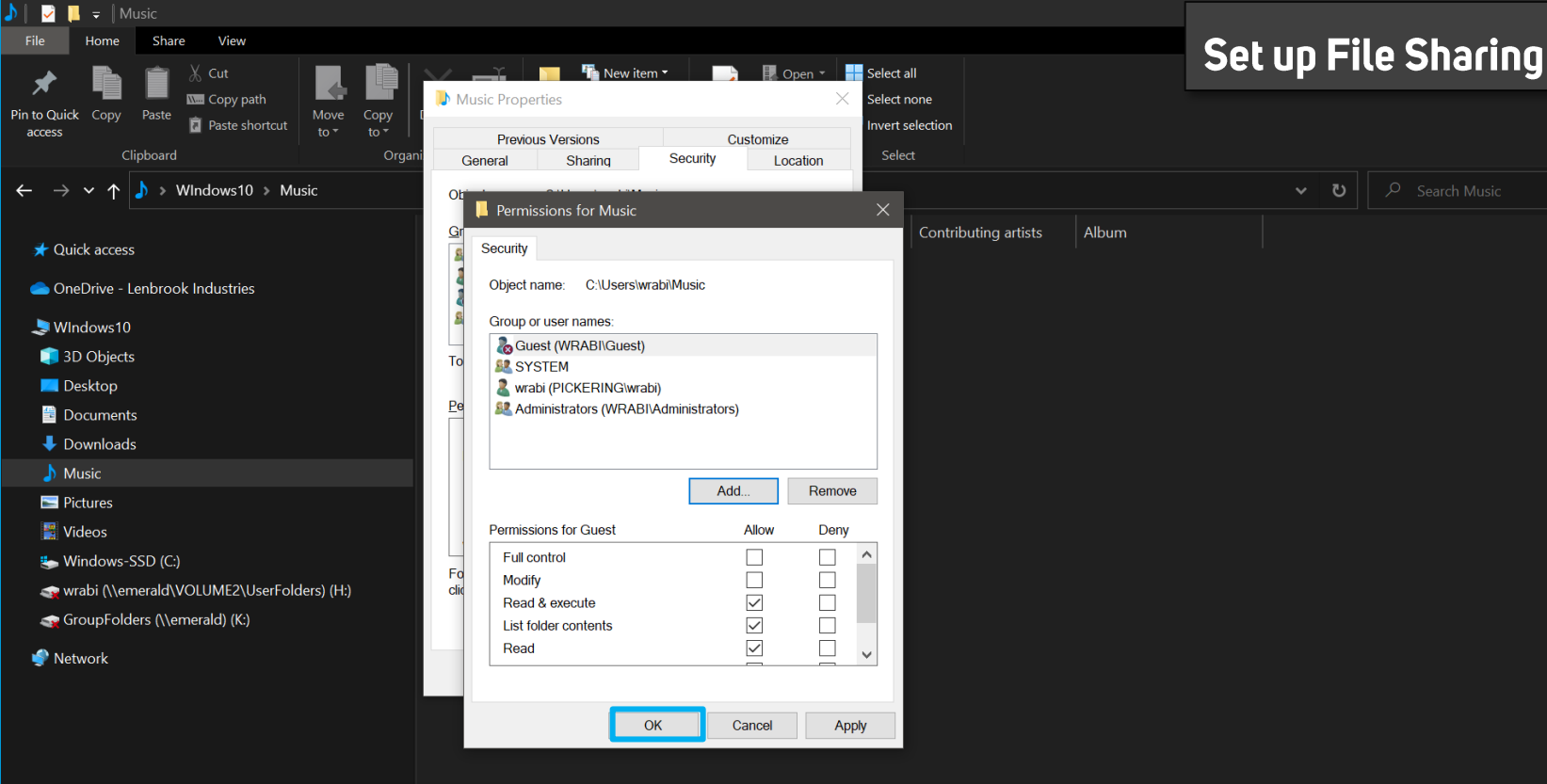


Click **Add**.



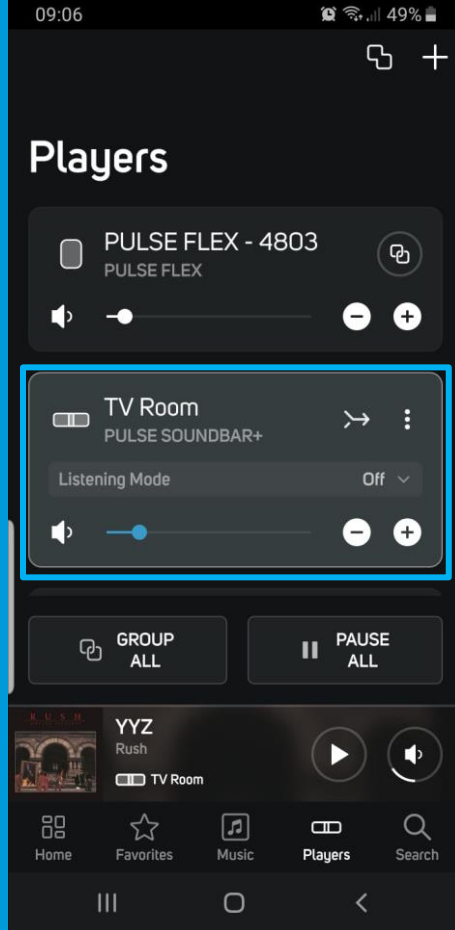
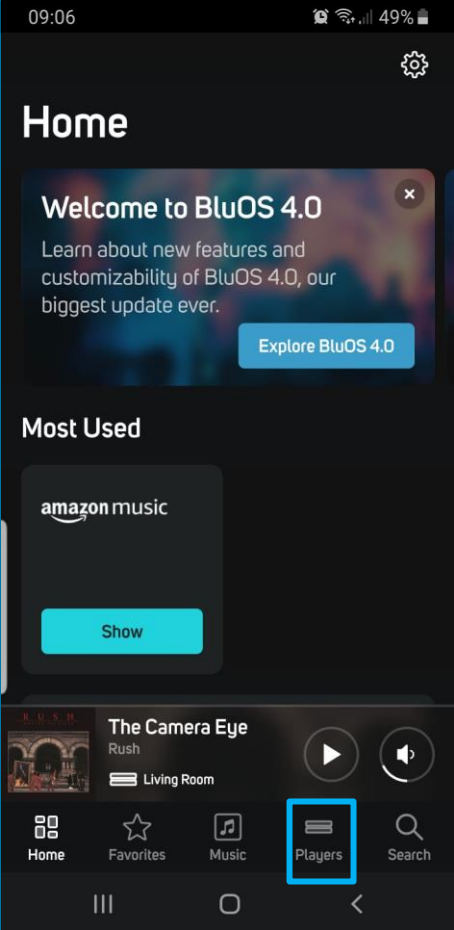
1 item

Enter **Guest** in the **Enter the object names to select** field and click **OK**.



On the **Permissions for Music** folder, click **OK** and close the File Explorer.

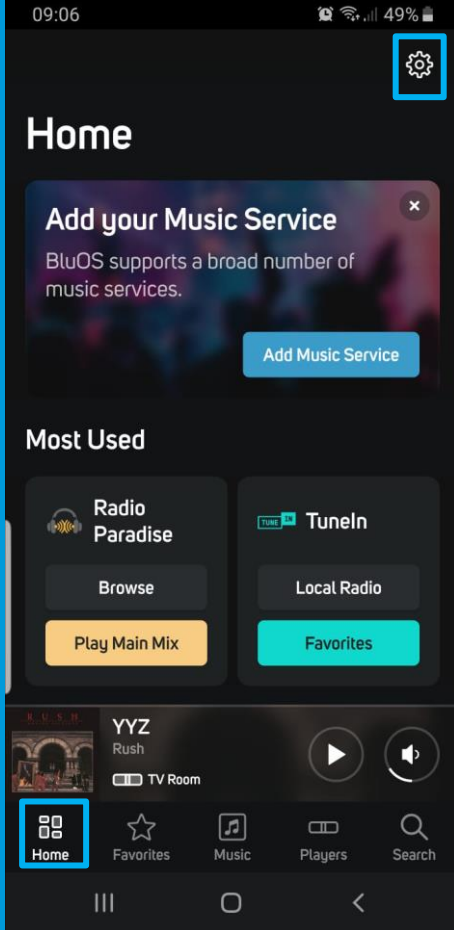
Before proceeding, please wait about 5-10 minutes for your Windows 10 computer to reflect the changes across the network.



Share your Music Library

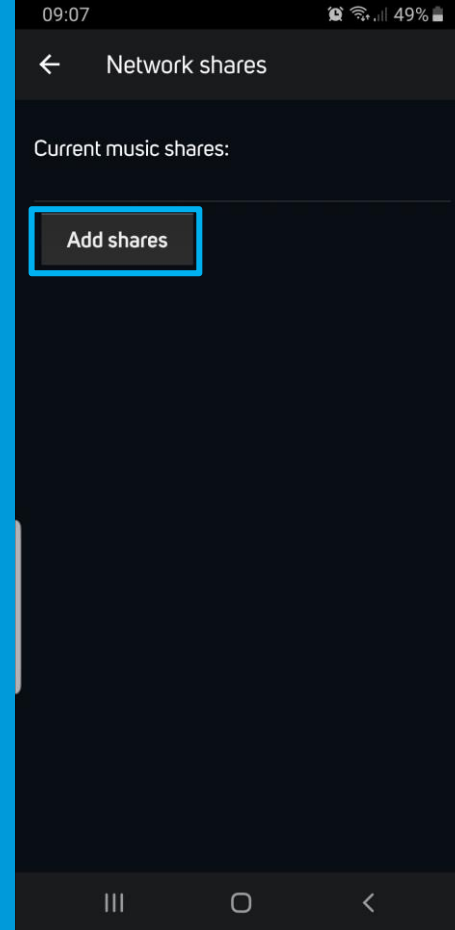
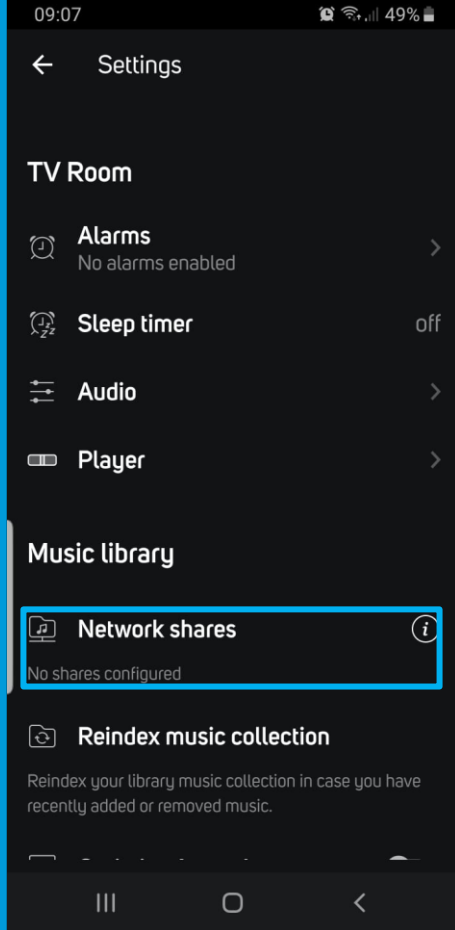
On the BluOS Controller App, select the **Players** tab and select any Player.

(Note: If you have a wired Player, select that one over a wireless Player, as it will have a faster response time.)



Share your Music Library

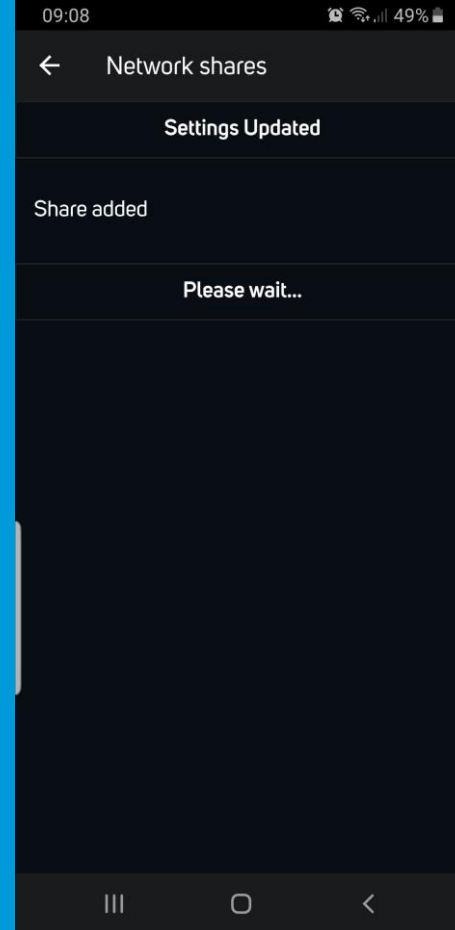
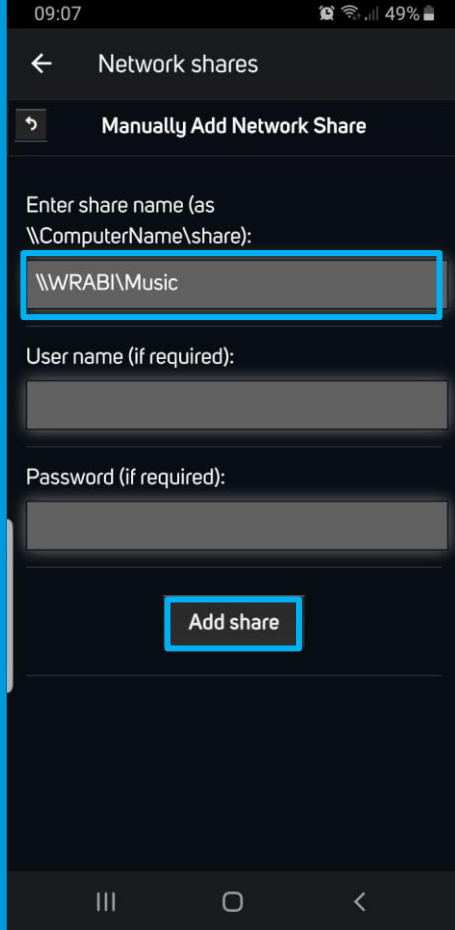
Navigate to **Home** tab > **Settings** button (*gear icon*).



Share your Music Library

Under Music library,
select **Network shares**.

Select **Add shares**.

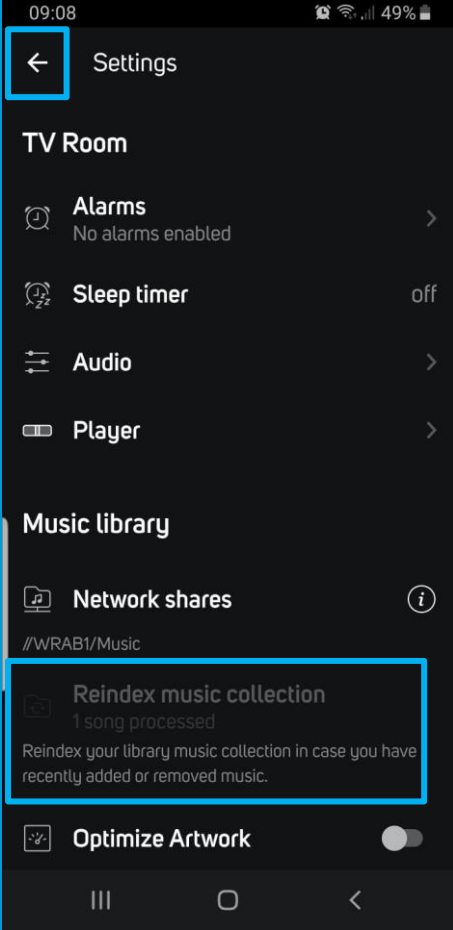
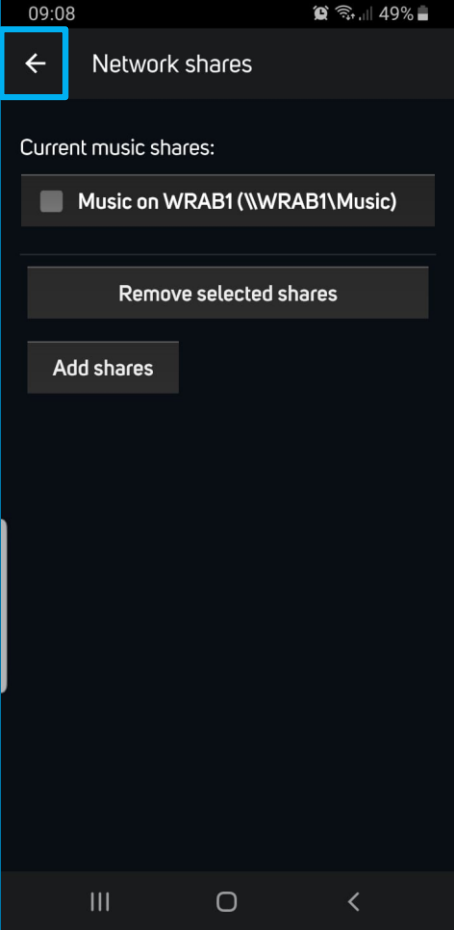


Share your Music Library

Enter previously noted **Network Path** name and **Folder name** as **\\NetworkPath\Folder** in the share name field.

Enter the **User name** and **Password** (if required) and select **Add share**.

When you receive the **Share added** message, the Player begins indexing.

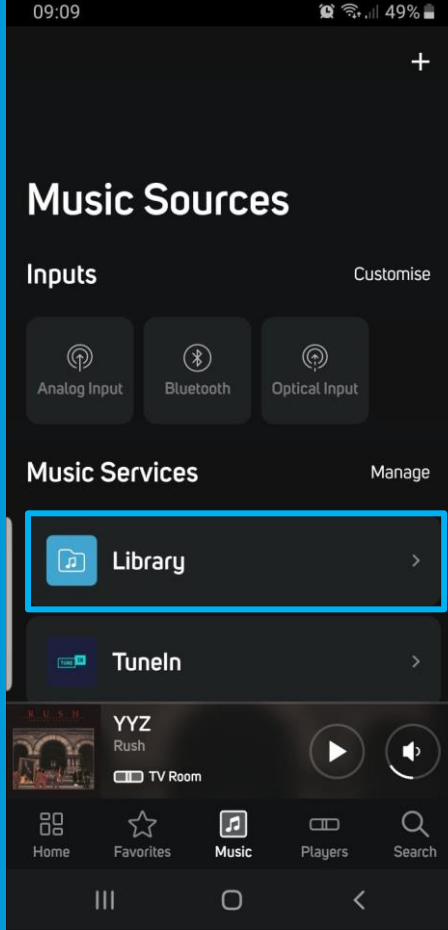
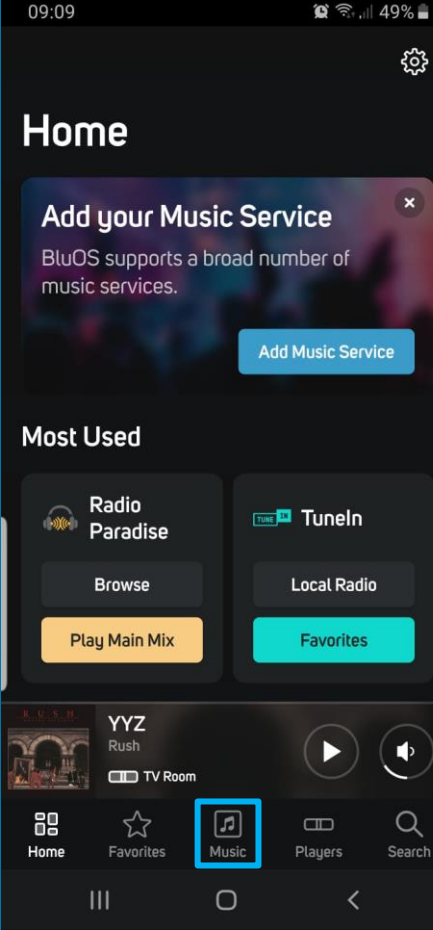


Share your Music Library

Select the left arrow in the upper-left corner to exit to previous screen.

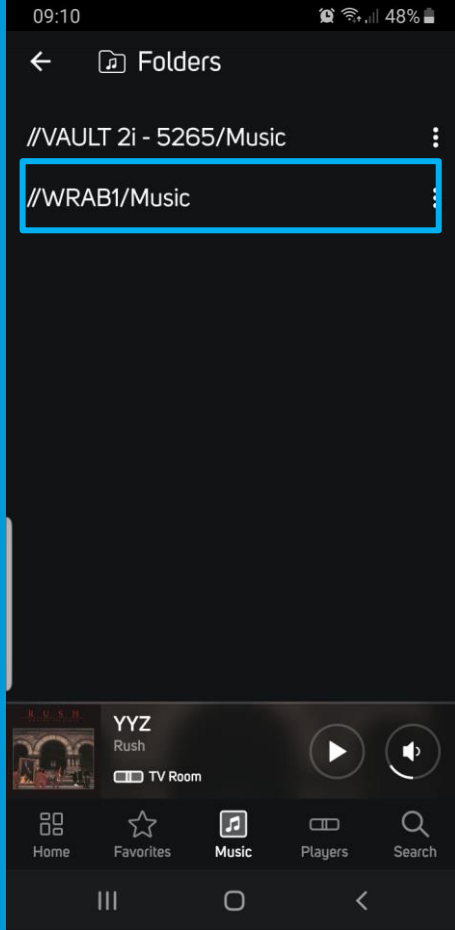
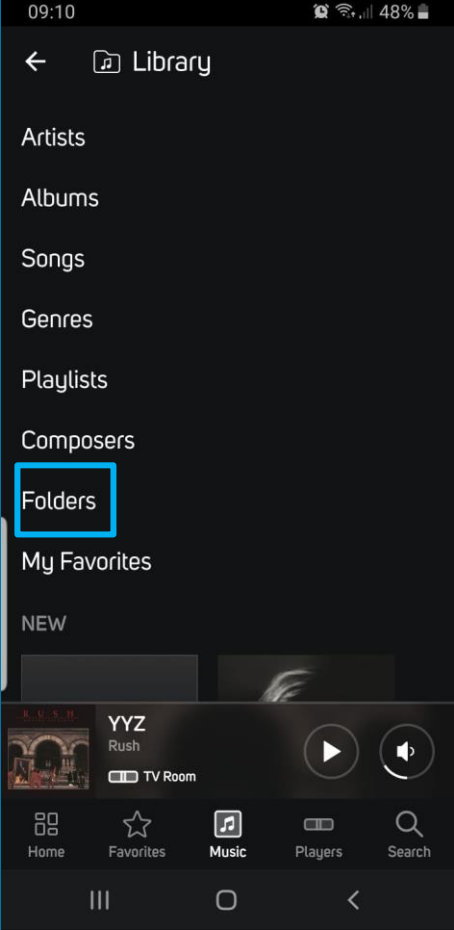
You can monitor the Indexing from the **Reindex music collection** section.

(Note: The Player also indicates the indexing via Status Indicator LED [solid White] or front panel messaging.)



Share your Music Library

Navigate to **Music** tab >
Library (under Music Services).



Share your Music Library

Now you can access the shared Music from the **Library**.

The shared database replicates to all other Players for individual or group playback.

Note: Every time you add or delete Music in the shared Music Folder on Windows, reindex the music collection. On the BluOS Controller App, select **Settings > Music Library > Reindex music collection**.

The BluOS logo is displayed in a white, sans-serif font. The 'B' is stylized with a vertical line through it. The background is a blue-tinted photograph of a smartphone on a table with a coffee cup and papers.

Bluos®

ANY QUESTIONS OR FEEDBACK?

THE BLUOS SUPPORT CREW IS HERE TO HELP

support@bluos.net

1-855-531-4666

www.bluos.io

© BluOS 2023